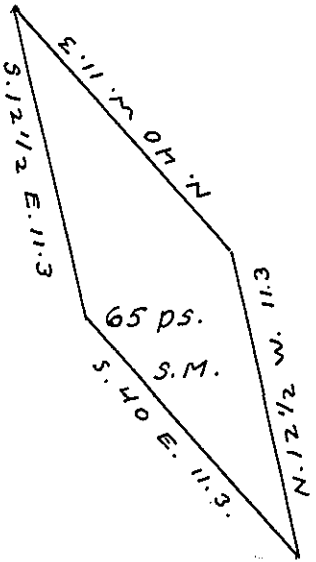


YORK COUNTY SHORE.



LANCASTER COUNTY SHORE.

A Draught of an Island situate in the river Susquehanna in Conestogo township Lancaster County about fifty yards East of the Shad Island & opposite land of Christian Shenk on the Lancaster County side Containing sixty five perches Strict Measure, surveyed in pursuance of a Warrant dated the 14<sup>th</sup> day of January, 1819 granted to Rudolph & Major Jacob Shenk.

To Jacob Spangler, Esq) Jacob Hibshman, D.S.  
 Surveyor General. }

IN TESTIMONY that the above is a copy of the original remaining on file in the Department of Internal Affairs of Pennsylvania, made conformably to an Act of Assembly approved the 16th day of February, 1833, I have hereunto set my Hand and caused the Seal of said Department to be affixed at Harrisburg, this Nineteenth day of December, 1906

*Loac J Brown*  
 Secretary of Internal Affairs.